



ASTILLEROS GONDAN

SHIPBUILDERS



DESIGNER: CINTRANAVAL - DEFCAR



Fast patrol boat designed and built to perform search and rescue operations at either coastal or at high sea waters

Length overall	39,00 m	Range full speed	1000 N miles
Moulded breadth at deck	7,30 m	Range eco Speed	2000 N miles
Moulded depth at midship	3,60 m	Speed half load	about 24.5 knots
Moulded design Draught	1,65 m	Propulsion type	Twin screw CLT FP propellers/shaft lines
Complement Max	30 members	Engines	2xCAT 3516 C,
Classification	100 A1 SSC Mono HSC+LMC		2 x 2525 kW @ 1800 rpm

Tel.: +34 985 63 62 50

Email: gondan@gondan.com

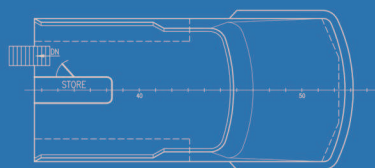
www.gondan.com

FAST PATROL BOAT disaster prevention vessel

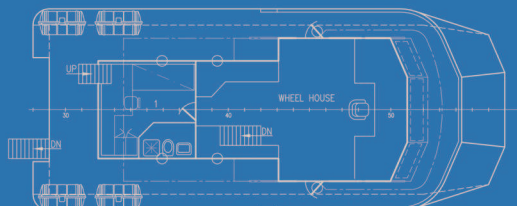


ASTILLEROS GONDAN

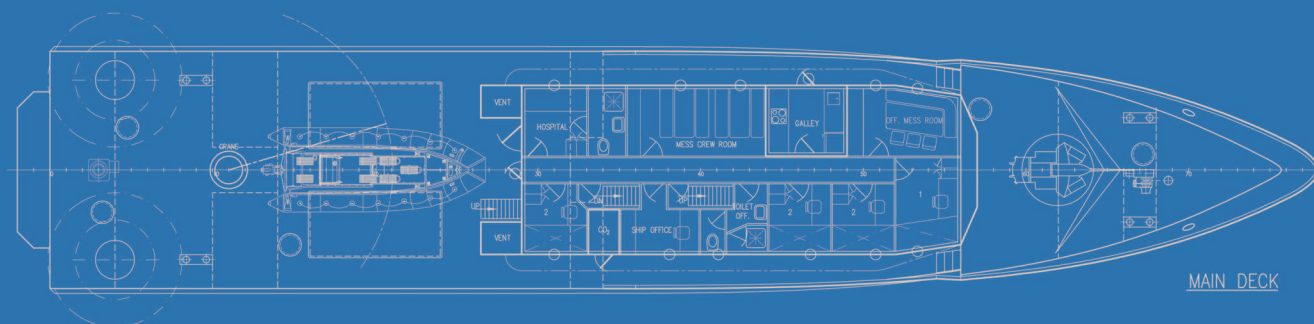
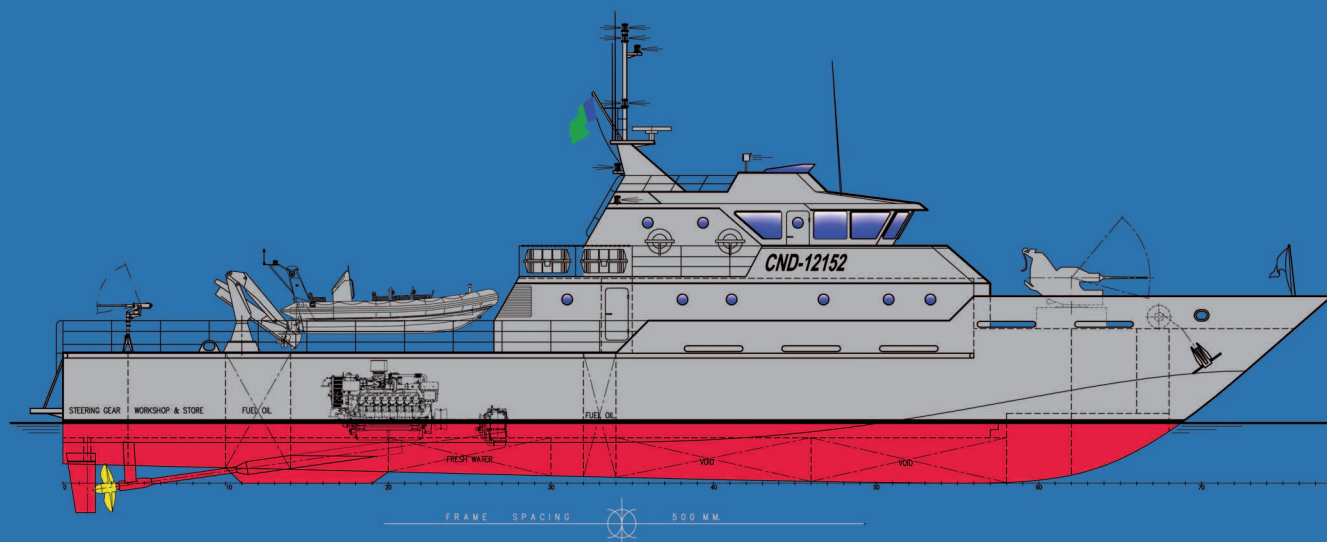
SHIPBUILDERS



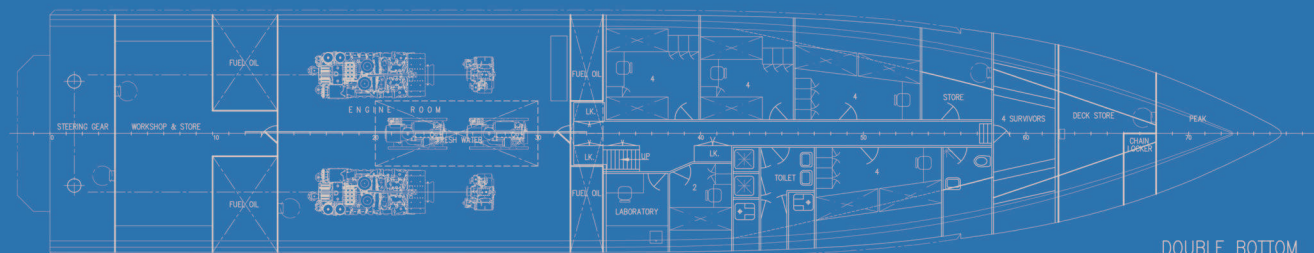
TOP BRIDGE DECK



BRIDGE DECK



MAIN DECK



DOUBLE BOTTOM